

Convenience Lighting

www.CarboniteCummins.com

By Flopster843

19 December 2011

In order to cut costs and make a larger profit, many automobile manufacturers decided to cut several minor items from the production line. Chrysler removed things like the glove box light, the ashtray light, and the under hood light on most models. I really like the glove box light and the under hood light, so I decided to install these items myself. Nearly all the wiring is already installed in the truck, and all the mounting locations are already there, you just have to hook it up.

I purchase all of my OEM parts from www.DodgeParts.com. They sell all of the OEM parts significantly cheaper than any local dealership, even including the shipping costs. Their customer service was top notch and they shipped out all the parts the day after I ordered them. I recommend you guys look them up for your OEM parts.

This article will detail the installation of 3 convenience lighting items on my truck:

- 1) The Glove Box Light
- 2) The Ash Tray Light
- 3) The Under Hood Light

Glove Box Light

OEM Part Number: **4565022**

This is fairly self explanatory. It's simply a light and a contact switch that will illuminate the interior of the glove box when you open it. This is one of the easiest accessories to install in your truck. The switch and light bulb are in one piece, all of the wiring is already installed, and the hole is already cut for the switch. All you have to do is pull out the blank plug in the hole and disconnect the wiring harness from the back of it. Attach the wiring harness to the new switch assembly and insert it back into the hole.

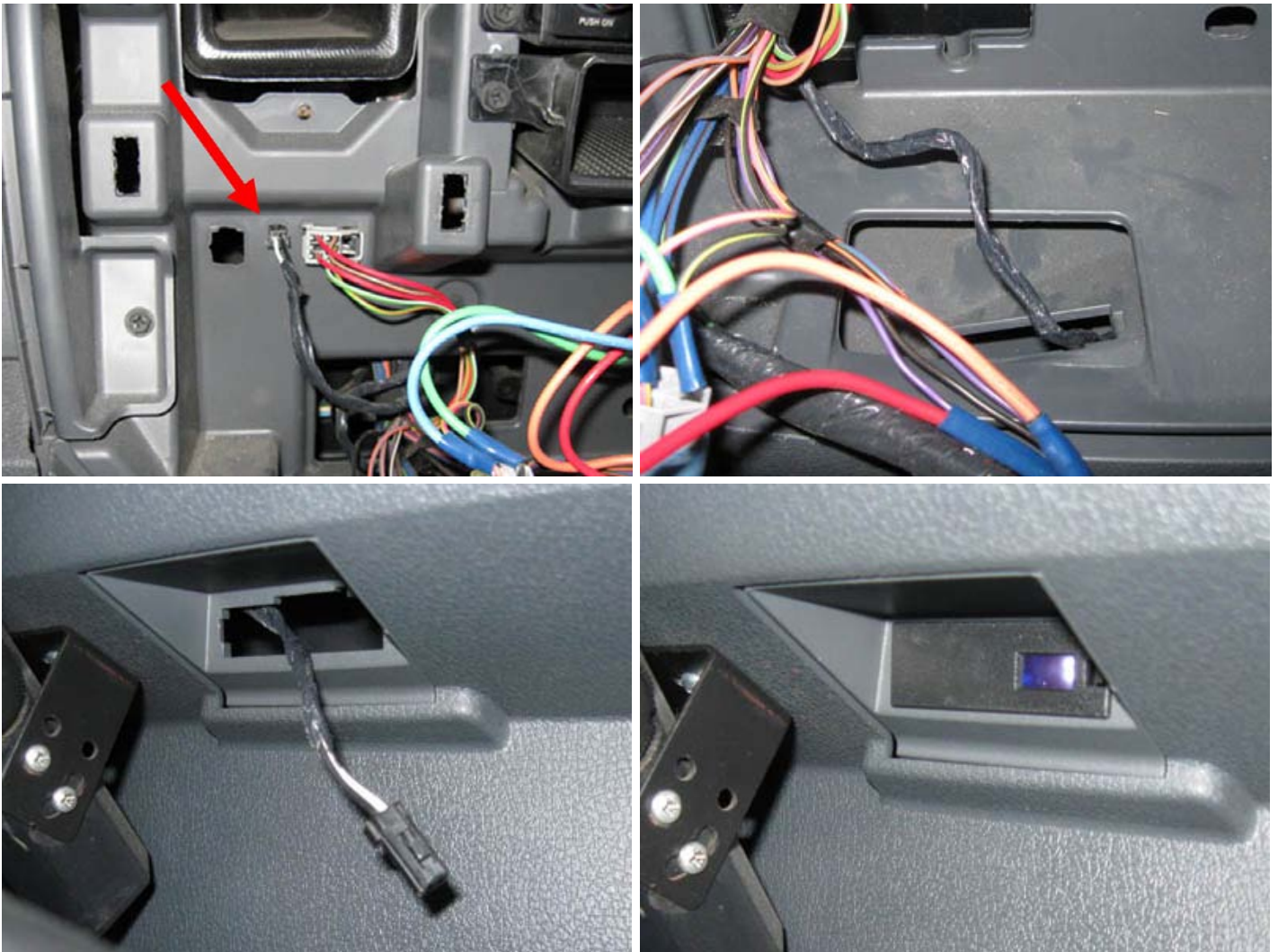


Ash Tray Light

OEM Part Number: **4608669AA**

This light is installed in the lower center dash area and illuminates the center console with a blue light. It's not very bright, but it's bright enough to show you the outline of any items you have in the console area. A note to manual transmission guys like me, the light does a really good job of illuminating the upper shift boot, but the shift boot blocks the light from reaching a good portion of the cup holders. It loses a good bit of its functionality, but I still think it's pretty neat.

Just like the glove box light, the mounting hole and all required wiring is already installed on the truck. Start by removing the center radio bezel by simply pulling out on it to release the snap clips and locate the small electrical plug with a black and a white wire going to it. Route this wire down to the hole where the ash tray light will be installed. Attach the wires to the light assembly and insert the light into the mounting hole. The light will activate whenever you switch your parking lights on.



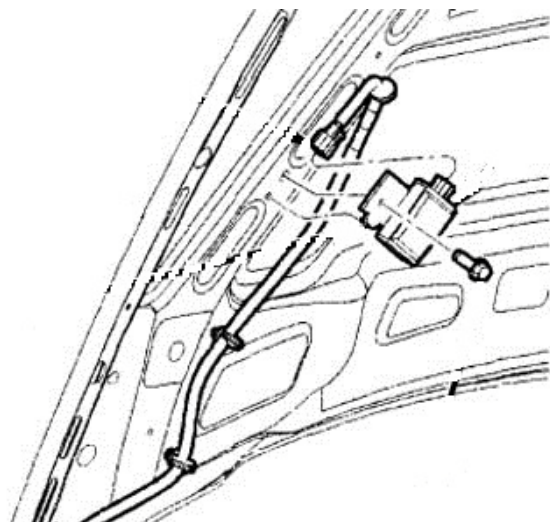
Under Hood Light

OEM Light Assembly Part Number: **56021441**

OEM Wiring Harness Part Number: **56021176AC**

This light mounts to the underside of the hood on the passenger side and provides light in the engine compartment when the hood is open. It contains an internal switch that is automatically activated when the hood is raised to turn the light on. It's slightly more difficult to install because you have to run a short (4 foot) wiring harness and have to use a screw, but I'm sure you could fumble through it.

Start at the electrical connector on the passenger side firewall, but don't connect it yet. Remove the plastic push pin from the insulation on the firewall and replace it with the first push pin on the harness. The second push pin is attached to the hood hinge using the pre-drilled hole. Push pin #3 goes in place of one of the plastic push pins holding the hood insulation. #4 and #5 go directly in the hood, under the insulation, in the pre-drilled holes. Use the pictures below to help you route the harness. Info note: I installed the light before the wiring harness; it would be easier to install the harness first so you have room to connect the plug before you bolt the light into place.



The light assembly is held onto the hood using a screw. It doesn't come with a screw, so you'll have to source one. I used a screw that I had leftover from installing my fender flares. Start by removing the clear lens from the light assembly by inserting a screwdriver into the back of it to release the clips, and then remove the bulb. Connect the electrical plug to the light assembly and screw it to the hood. Then reinstall the bulb and lens. After all that is done, connect the harness to the electrical connector on the firewall to power the light assembly.



Special Thanks To



111 Bond Street

Westbury, NY 11590

1-877-211-4887

www.dodgeparts.com